

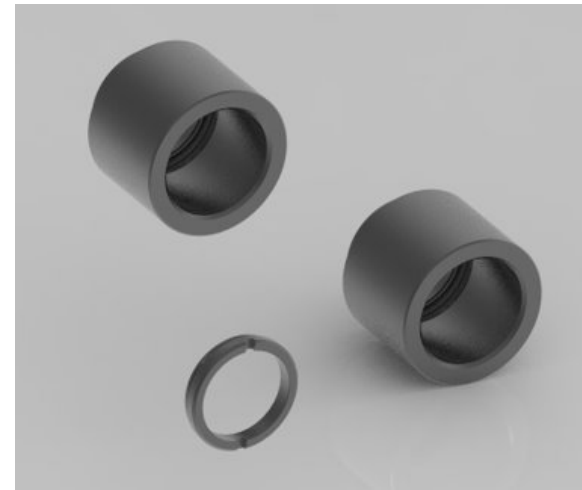


DEMO KIT - Light

To test lens and tube centering and their repeatability.

To test this kit, you will need to provide:

- A lens (diameter 12mm, radius of curvature higher than 11.5mm). To test a smaller radius of curvature, add 1x SRD05 - SPLIT RING D05.
- A Spanner Wrench (Thorlabs PN SPW603 or equivalent).



QTY	ITEM NUMBER	ITEM NAME	ITEM COST	TOTAL COST (USD)
2	TMF127QC05	TUBE, MALE-FEMALE, QC05, 25.4MM	\$ 63	\$ 126
1	RQC05	THREADED RING QC05	\$ 23	\$ 23
		1 DEMO KIT LIGHT		\$ 149

CONTACT US

1 866 657-7406 | info@ino.ca

ino.ca    

Québec (Head Office)
2740 Einstein Street
Québec (Québec) G1P 4S4
CANADA
418 657-7006

Hamilton
175 Longwood Road South, #316 A
Hamilton (Ontario) L8P 0A1
CANADA
905 529-7016

