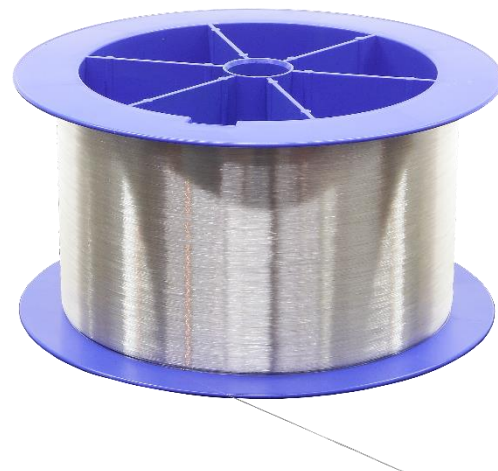


INO

Yb401-PM

Yb-doped single clad PM fiber

The Yb401-PM is a single-clad and truly single-mode polarization-maintaining fiber featuring a 6.0 μm MFD @ 1060 nm, a core absorption of 140 dB/m @ 915nm and low photodarkening core chemistry. This fiber is well adapted for low power pulsed amplifiers pumped using single-mode laser diodes. The Yb401-PM is a low-photodarkening drop-in equivalent of the Yb501-PM fiber.



OPTICAL PROPERTIES	
Core NA	0.14 \pm 0.02
Mode field diameter @1060 nm	6.0 \pm 1.0
LP ₁₁ cut-off wavelength	800 - 900 nm
Core absorption @ 915 nm	140 \pm 25 dB/m
Nominal core absorption @ 975 nm	600 dB/m
Birefringence	$\geq 3.0 \times 10^{-4}$
PHYSICAL PROPERTIES	
Optical cladding	Single
Core diameter	5.0 \pm 0.5 μm
Cladding diameter	125 \pm 1 μm
Coating diameter	250 \pm 10 μm
Cladding geometry	Round
Low photodarkening chemistry	Yes
Screen proof tested	≥ 100 kpsi
Confined core	No
Depressed cladding	No

TYPICAL APPLICATIONS

- Low power pulsed amplifiers